

**MetricVision GmbH**

# **Grain Boundary Analysis Report**

## **Analysis Results**

March 08, 2026

Confidential - For Internal Use Only

## Table of Contents

Table of Contents	2
Executive Summary	3
test_02.png	4

## Executive Summary

### Overall Statistics

Metric	Value
Total Measurements	1

### Measurement Comparison

Measurement	Model	Approximate Grain Size (px)	Threshold	Mean Line Intersection Length ( $\mu\text{m}$ )
<a href="#">test_02.png</a>	ME_1124	150	0.52	19.77

## test\_02.png

### Analysis Settings

Settings	Value
Image Name	test_02.png
Used Model	ME_1124
Threshold	0.515
Approximate Grain Size	150

### Processed Grain Boundaries

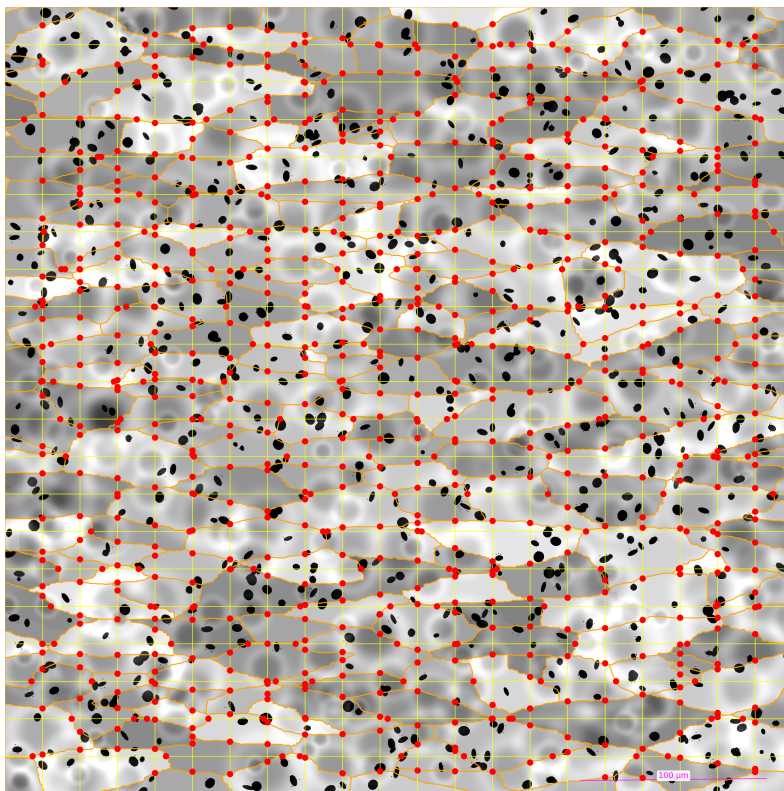
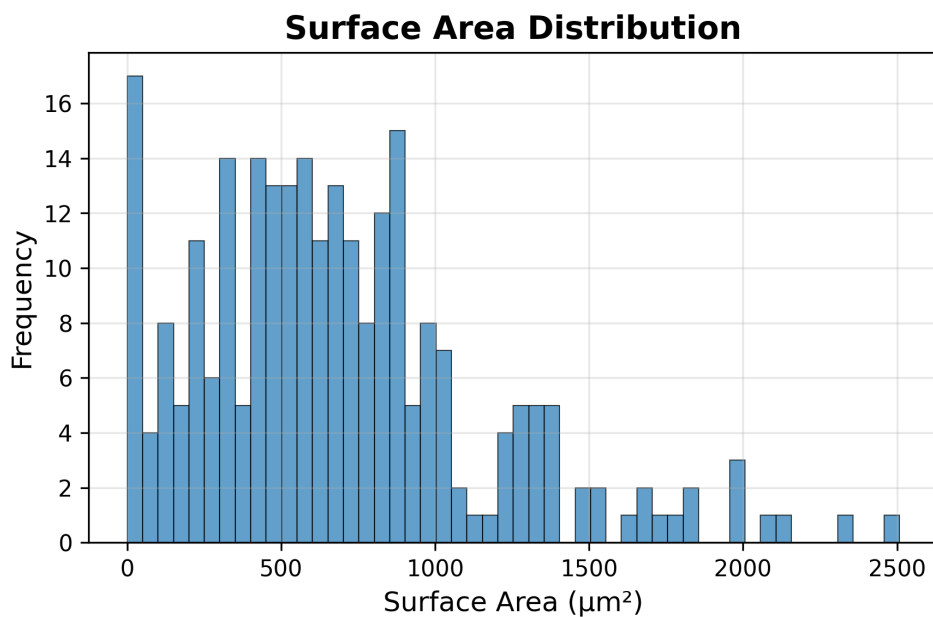


Image: test\_02.png

### Distribution Analysis



Statistics: Mean = 686.65, Min = 0.12, Max = 2507.80, Count = 255

### Analysis Results

Results	Value
Mean Line Intersection Length	19.77 µm
Number Of Grains	255
Equivalent Circular Diameter	0.38 µm
Area Fraction	4.00 µm

## Disclaimer

This report contains proprietary and confidential information generated by MetricVision GmbH. The analysis results, data, and findings presented herein are intended solely for the use of the authorized recipient. Unauthorized disclosure, reproduction, or distribution of this information is strictly prohibited.

The measurements and analyses provided in this report are based on the image data and parameters specified at the time of generation. Results may vary depending on image quality, sample preparation, and analysis settings. MetricVision GmbH makes no warranties, expressed or implied, regarding the accuracy, completeness, or suitability of the information contained in this report for any particular purpose.

Users are advised to review all analysis parameters and settings carefully. The interpretation of results should be performed by qualified personnel familiar with the methodology and application context.

### MetricVision GmbH

Registration Number: 657736i

Badgasse 5

8670 Krieglach

Styria, Austria

Email: [office@metricvision.at](mailto:office@metricvision.at)

Phone: +43 670 19 80 225